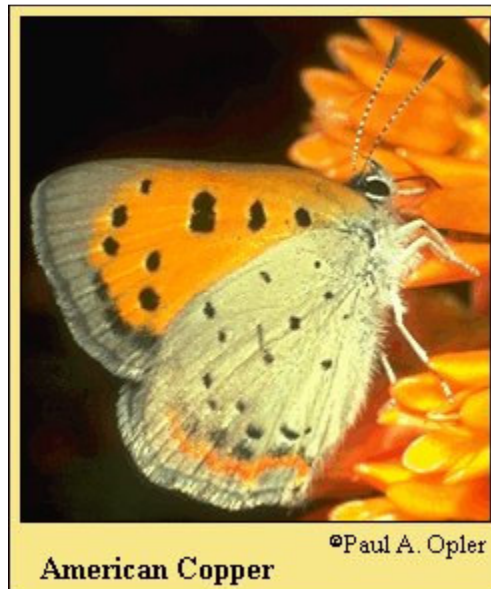


American Copper

Lycanea phlaeas

-As bright as a copper kettle, this is one of the most common species of butterflies in North America. Males and females look very much alike but may vary in their coloring, depending on where they live and when they hatched. One of the smallest butterflies, the American Copper flies low to the ground, so it's easy to miss. The can be aggressive toward passerby, darting out to challenge trespassers on their territory.



Wingspan: 7/8 to 1 1/8 inch

Caterpillar hosts: The American Copper predominantly uses the Curled Dock, (*Rumex crispus*), which is a common weed along roadways in Langlade County, so there is no real need to plant it.

Adult food: The adult American Copper will feed on Swamp Milkweed, Joe Pye Weed, Boneset, and Butterfly Weed.