

Wild Celery

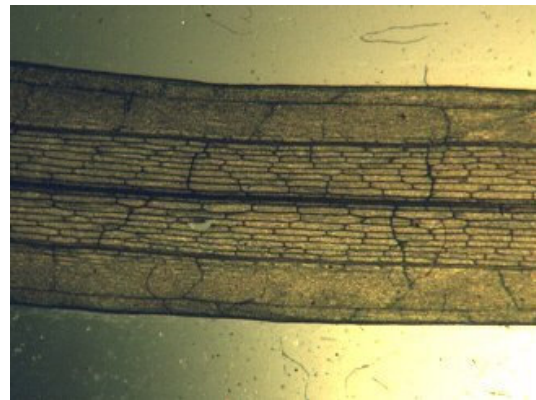
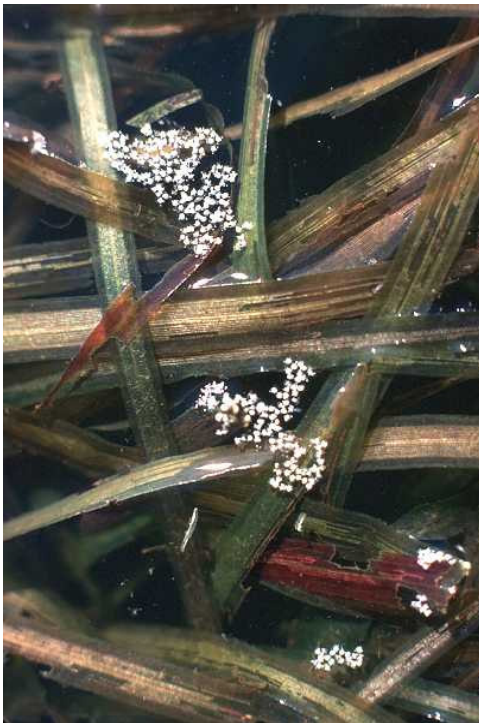
Vallisneria americana

-Wild Celery has ribbon-like leaves that emerge in clusters along a creeping rhizome. The leaves have a prominent central stripe and a cellophane-like consistency. The leaves are mostly submersed, with just the tips trailing on the surface of the water.

-Wild Celery is usually found in water ranging from ankle-deep to several meters. It can tolerate turbidity and will survive in a broad range of water chemistries.

-Wild Celery is a premiere source of food for waterfowl. All portions of the plant are consumed including foliage, rhizomes, tubers, and fruit. Wild Celery beds become a prime destination for thousands of canvasback ducks every fall. The relationship between Wild Celery and canvasbacks is so strong that the scientific name of these ducks is *Aythya valisneria*.

-Wild Celery is also important to marsh birds and shore birds including rail, plover, sand piper, and snipe. Muskrats are also known to graze on it. Beds of Wild Celery are considered good fish habitat providing shade, shelter, and feeding opportunities.



You can never enter the same river twice.

-Zeno's Paradox